

Product Highlights

Designed for Surveillance

The switches feature two modes: Standard Mode and Surveillance Mode, allowing the user to choose the interface most suitable for their needs

Revolutionary Energy Efficiency

Innovative D-Link Green features help conserve energy without sacrificing performance so you can reduce operating costs and protect the environment

Easy Management

A surveillance overview, ONVIF device support and video traffic optimization simplify the process of managing a surveillance network



DGS-1100 MP/MPP Series

Smart Managed Gigabit Ethernet PoE Switches

Features

Physical

- High PoE budgets and support for IEEE 802.3bt 90 W PoE (DGS-1100 MPP Series)
- Fiber uplink ports for connection to a NVR or CMS center

Surveillance Network

- Easy deployment with automatic configuration
- Surveillance traffic optimization
- Auto-detect ONVIF devices
- Intuitive interface for monitoring and management
- Descriptive health diagnostics

Advanced Features

- IGMP Snooping
- Bandwidth Control
- IEEE 802.1Q VLAN traffic segregation
- Port-based VLANs
- IEEE 802.1p
- Surveillance VLAN
- Voice VLAN
- G.8032 ERPS

Management Features

- Client-based utility or web-based GUI
- Built-in SNMP MIB
- Status Dashboard

Overview

The DGS-1100 MP/MPP Series is a range of switches designed to meet the surveillance requirements of small, medium, and enterprise businesses. Support for high-powered Pan Tilt Zoom (PTZ) cameras, and automatic Surveillance VLAN make the DGS-1100 MP/MPP Series ideal for IP surveillance deployments. A redesigned interface, a range of diagnostic and troubleshooting tools, and energy efficient technologies provide a flexible solution to your surveillance requirements.

Easy to Deploy

An interactive setup wizard removes the complexity from installing the switch for the first time. It allows you to choose the web interface mode (Standard or Surveillance), the IP address allocation method (static or DHCP), and the administrator user name and password. This completes the initial setup of the switch and automatically configures features such as Loop Detection, DHCP Snooping, SNMP and Surveillance VLAN. An informative quick start guide shows you how to use the network diagram, and a network overview is displayed on the next page. D-Link and 3rd party devices are automatically detected and shown on the network overview page for easy administration.

Surveillance Traffic Optimization

The DGS-1100 MP/MPP Series supports the automatic Surveillance VLAN feature. This automatically detects surveillance devices and puts them into the Surveillance VLAN, segmenting their traffic from the rest of the network. This ensures security of the data, but also gives the traffic a higher priority through the switch, reducing the chances of the video freezing or being delayed on live streams. A single switch can be used for both surveillance and data networks, removing the need for dedicated surveillance hardware and reducing maintenance costs.

Intuitive Web Interface

A redesigned Surveillance interface makes surveillance features more accessible than ever. The choice between Standard and Surveillance modes can be made during switch set up, allowing the user to choose the interface that best suits their requirements. A network overview shows which devices are connected to which ports, and ONVIF device support allows the switch to recognize both D-Link and 3rd party IP cameras and Network Video Recorders (NVRs). With monitoring, management, and troubleshooting tools built into a single interface, the DGS-1100 MP/MPP Series provides everything you need to manage your surveillance network.

Easy Troubleshooting

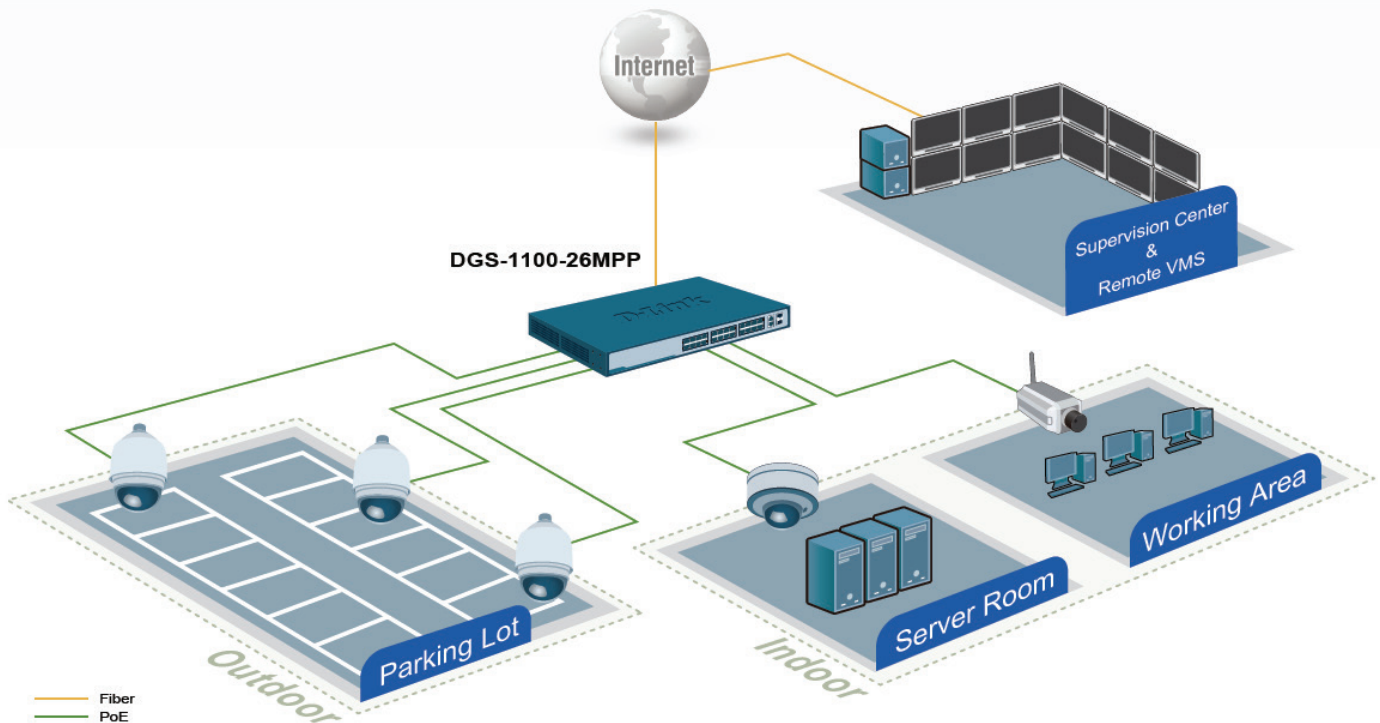
The DGS-1100 MP/MPP Series features Loopback Detection and Cable Diagnostics to help network administrators find and solve network problems quickly and easily. Loopback Detection detects loops in the network, where multiple devices have been connected to each other and there is a forwarding loop. The switch will identify the port causing the loop and shut the affected port down to avoid network instability. Cable Diagnostics can be used to remotely test the quality of copper cables, recognize the cable type, and detect cable errors.

PoE Support

The DGS-1100 MP/MPP Series provides support for Power over Ethernet (PoE), reducing deployment time for IP cameras, VoIP phones, and access points. The DGS-1100-10MPP and DGS-1100-26MPP support IEEE 802.3bt, providing up to 90 watts on selected ports for the latest high-powered Pan Tilt Zoom (PTZ) cameras. All switches in the DGS-1100 MP/MPP Series support IEEE 802.3af and 802.3at, providing up to 30 watts per port. This, combined with high power budgets, ensure all of your critical surveillance infrastructure can be powered from a single switch.

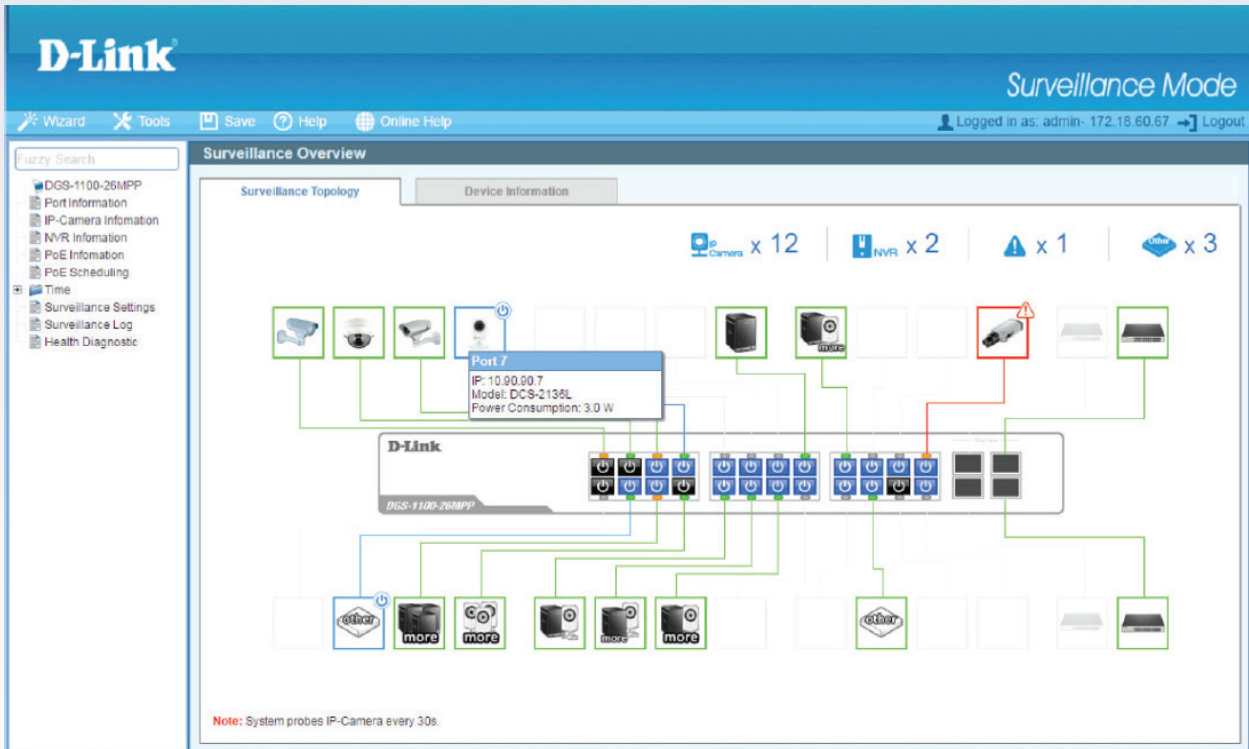
Lifetime Warranty

D-Link offers a Lifetime Warranty and Next Business Day (NBD) hardware replacement on the DGS-1100 MP/MPP Series Smart Managed Gigabit switches to further its commitment to product quality and long-term customer confidence.²

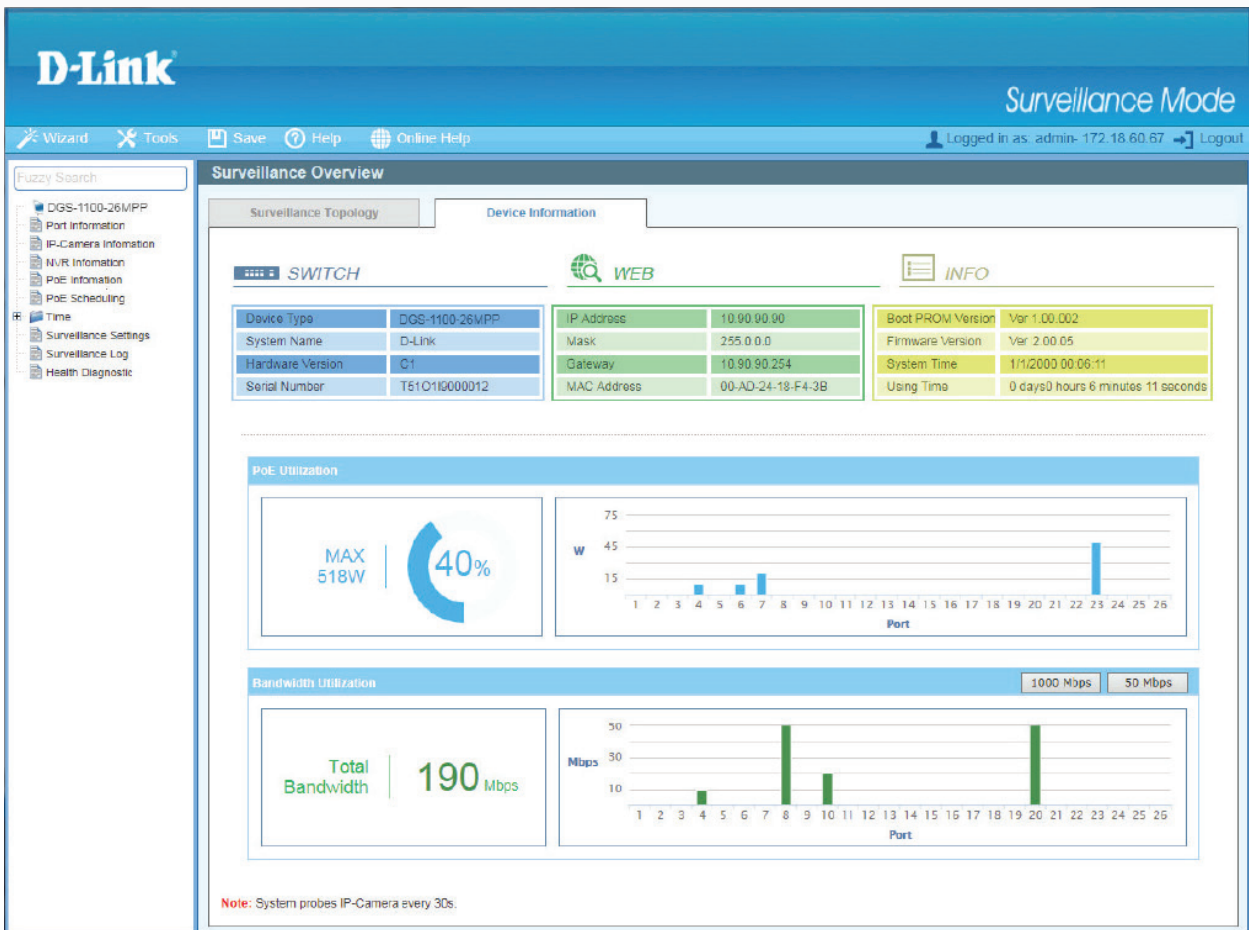






Example Surveillance Topology

Surveillance Topology Web Interface Screenshot



Device Information Web Interface Screenshot



Technical Specifications				
	DGS-1100-10MP	DGS-1100-10MPP	DGS-1100-26MP	DGS-1100-26MPP
				
General				
Hardware Version	Rev. C	Rev. C	Rev. C	Rev. C
Size	11-inch desktop size ¹ 1U height	11-inch desktop size ¹ 1U height	19-inch rackmount size 1U height	19-inch rackmount size 1U height
Number of Ports	<ul style="list-style-type: none"> • 8 x 10/100/1000 Mbps PoE • 2 x SFP 1000 Mbps 	<ul style="list-style-type: none"> • 8 x 10/100/1000 Mbps PoE • 2 x SFP 1000 Mbps 	<ul style="list-style-type: none"> • 24 x 10/100/1000 Mbps PoE • 2 x Gigabit SFP/RJ45 Combo 	<ul style="list-style-type: none"> • 24 x 10/100/1000 Mbps PoE • 2 x Gigabit SFP/RJ45 Combo
Port Functions	<ul style="list-style-type: none"> • IEEE 802.3 compliant • IEEE 802.3u compliant • IEEE 802.3ab compliant • IEEE 802.3af/802.3at compliant • IEEE 802.3bt (DGS-1100-10MPP/26MPP only) • IEEE 802.3x Flow Control supports full-duplex mode 		<ul style="list-style-type: none"> • Supports manual/auto MDI/MDIX configuration • Auto-negotiation • Supports half/full-duplex operation • IEEE 802.3az compliant 	
Performance				
Switching Capacity	20 Gbps	20 Gbps	52 Gbps	52 Gbps
Maximum Forwarding Rate	14.88 Mpps	14.88 Mpps	38.69 Mpps	38.69 Mpps
MAC Address Table Size	8K Entries	8K Entries	8K Entries	8K Entries
Packet Buffer	4.1 Mb	4.1 Mb	4.1 Mb	4.1 Mb
Flash Memory	32 MBytes	32 MBytes	32 MBytes	32 MBytes
Power over Ethernet				
PoE Standard	IEEE 802.3af/802.3at	IEEE 802.3af/802.3at/ 802.3bt	IEEE 802.3af/802.3at	IEEE 802.3af/802.3at/ 802.3bt
PoE Capable Ports	Ports 1 to 8	Ports 1 to 8	Ports 1 to 24	Ports 1 to 24
PoE Power Budget	<ul style="list-style-type: none"> • 130W total • 30W max. per PoE port for ports 1 to 8 	<ul style="list-style-type: none"> • 242W total • 30W max. per PoE port for ports 1 to 6 • 90W max. per PoE port for ports 7 to 8 	<ul style="list-style-type: none"> • 370W total • 30W max. per PoE port for ports 1 to 24 	<ul style="list-style-type: none"> • 518W total • 30W max. per PoE port for ports 1 to 20 • 90W max. per PoE port for ports 21 to 24
Power Consumption				
Standby Mode	10.4W	10.4W	15.12W	15.12W
Maximum Power Consumption	132.6 W (PoE on) 10.45 W (PoE off)	250.85 W (PoE on) 10.45 W (PoE off)	375 W (PoE on) 16.21 W (PoE off)	529.3 W (PoE on) 16.21 W (PoE off)
Physical & Environmental				
Power Input	100 to 240 VAC 50 to 60 Hz Internal Power Supply	100 to 240 VAC 50 to 60 Hz Internal Power Supply	100 to 240 VAC 50 to 60 Hz Internal Power Supply	100 to 240 VAC 50 to 60 Hz Internal Power Supply
MTBF	386,307 hours	386,307 hours	299,588 hours	299,588 hours
Acoustics	45.4 dB(A)	45.4 dB(A)	56 dB(A)	56 dB(A)

Heat Dissipation	570.51 BTU/hr	570.51 BTU/hr	1470.46 BTU/hr	1470.46 BTU/hr
Weight	1.67 kg (3.68 lbs)	1.67 kg (3.68 lbs)	3.9 kg (8.60 lbs)	3.9 kg (8.60 lbs)
Dimensions (W x D x H)	294 x 180 x 44 mm (11.57 x 7.08 x 1.73 in)	294 x 180 x 44 mm (11.57 x 7.08 x 1.73 in)	440 x 285 x 43 mm (17.32 x 11.22 x 1.69 in)	440 x 285 x 43 mm (17.32 x 11.22 x 1.69 in)
Ventilation	1 x Fan	1 x Fan	2 x Fans	2 x Fans
Operating Temperature	-5 to 50 °C (23 to 122 °F)	-5 to 50 °C (23 to 122 °F)	-5 to 50 °C (23 to 122 °F)	-5 to 50 °C (23 to 122 °F)
Storage Temperature	-40 to 70 °C (-40 to 158 °F)	-40 to 70 °C (-40 to 158 °F)	-40 to 70 °C (-40 to 158 °F)	-40 to 70 °C (-40 to 158 °F)
Operating Humidity	0% to 95% non-condensing	0% to 95% non-condensing	0% to 95% non-condensing	0% to 95% non-condensing
Storage Humidity	0% to 95% non-condensing	0% to 95% non-condensing	0% to 95% non-condensing	0% to 95% non-condensing
EMI Certifications	FCC/IC, CE, VCCI, BSMI, CCC	FCC/IC, CE, VCCI, BSMI, CCC	FCC/IC, CE, VCCI, BSMI, CCC	FCC/IC, CE, VCCI, BSMI, CCC
Safety	cUL, UL, LVD, CB, CCC, BSMI	cUL, UL, LVD, CB, CCC, BSMI	cUL, UL, LVD, CB, CCC, BSMI	cUL, UL, LVD, CB, CCC, BSMI

Software Features - All Models

VLAN	<ul style="list-style-type: none"> • Port-based VLAN • 802.1Q Tagged VLAN • Auto Surveillance VLAN • Voice VLAN • Management VLAN 	<ul style="list-style-type: none"> • Asymmetric VLAN • VLAN Group <ul style="list-style-type: none"> • Supports 128 static VLAN groups • Max. 4094 VIDs
L2 Features	<ul style="list-style-type: none"> • Flow Control <ul style="list-style-type: none"> • 802.3x Flow Control • HOL Blocking Prevention • Jumbo Frames up to 9216 Bytes • IGMP Snooping <ul style="list-style-type: none"> • IGMPv1/v2/v3 Snooping • Supports 64 Groups • IGMP Snooping Querier • 802.3ad Link Aggregation: <ul style="list-style-type: none"> • DGS-1100-10MP: Support 5 groups/device and 8 ports/group • DGS-1100-26MP: Support 13 groups/device and 8 ports/group • DGS-1100-10MPP: Support 5 groups/device and 8 ports/group • DGS-1100-26MPP: Support 13 groups/device and 8 ports/group • Ethernet Ring Protection Switching <ul style="list-style-type: none"> • G.8032 ERPS • Loopback Detection 	<ul style="list-style-type: none"> • Cable Diagnostics • LLDP • Port Mirroring <ul style="list-style-type: none"> • One-to-One • Many-to-One • Statistics <ul style="list-style-type: none"> • Tx Ok • Tx Error • Rx Ok • Rx Error • Spanning Tree Protocol <ul style="list-style-type: none"> • 802.1D STP • 802.1w RSTP • L2 Multicast <ul style="list-style-type: none"> • MLD Snooping
Quality of Service (QoS)	<ul style="list-style-type: none"> • 802.1p Quality of Service <ul style="list-style-type: none"> • 4 queues per port • Queue Handling <ul style="list-style-type: none"> • Strict • Weighted Round Robin (WRR) 	<ul style="list-style-type: none"> • Port-based Bandwidth Control (Rate Limiting) <ul style="list-style-type: none"> • Ingress: 8 Kbps • Egress: 64 Kbps
Security	<ul style="list-style-type: none"> • D-Link Safeguard • Traffic Segmentation • Broadcast/Multicast/Unknown Unicast Storm Control 	<ul style="list-style-type: none"> • DoS Attack Prevention • SSL
Management	<ul style="list-style-type: none"> • Web-Based GUI: <ul style="list-style-type: none"> • Supports IPv4/IPv6 	<ul style="list-style-type: none"> • Client-based Utility (D-Link Network Assistant Utility)
Green Technology	<ul style="list-style-type: none"> • Power Saving by: <ul style="list-style-type: none"> • Link Status • LED Shut-off • Port Shut-off • System hibernation 	<ul style="list-style-type: none"> • Compliant with IEEE 802.3az Energy Efficient Ethernet

DGS-1100 MP/MPP Series

Smart Managed Gigabit Ethernet PoE Switches

MIB/RFC Standards	<ul style="list-style-type: none"> • RFC768 UDP • RFC791 IP • RFC792 ICMP • RFC793 TCP • RFC826 ARP • RFC1213 MIB II • RFC1493 Bridage MIB • RFC1907 SNMPv2 MIB • RFC1215 MIB Traps Convention 	<ul style="list-style-type: none"> • RFC2233 Interface Group MIB • RFC2665 Ether-like MIB • RFC4363 IEEE 802.1p MIB • ZoneDefense MIB • Private MIB • RFC951 BootP client • RFC1542 BootP/DHCP client • RFC2236 IGMP Snooping
-------------------	---------------------------------------------------------------------------------------------------------------------------------------------------------------------------------------------------------------------------------------------------------------------------------------	-------------------------------------------------------------------------------------------------------------------------------------------------------------------------------------------------------------------------------------------------------------------------------------------------------------

Ordering Information

Product	Description	Warranty
DGS-1100-10MP	8-Port 10/100/1000 Mbps + 2-Port SFP 1000 Mbps PoE switch	Lifetime ²
DGS-1100-26MP	24-Port 10/100/1000 Mbps + 2-Port Combo 1000BASE-T/SFP PoE switch	Lifetime ²
DGS-1100-10MPP	8-Port 10/100/1000 Mbps + 2-Port SFP 1000 Mbps PoE switch	Lifetime ²
DGS-1100-26MPP	24-Port 10/100/1000 Mbps + 2-Port Combo 1000BASE-T/SFP PoE switch	Lifetime ²

Optional 1 Gbps SFP Transceivers

DEM-712	1000BASE-T SFP Transceiver
DEM-310GT	1000BASE-LX SFP Transceiver
DEM-311GT	1000BASE-SX SFP Transceiver

¹ 19-inch rack-mounting brackets included.

² Lifetime Warranty available in U.S.A. only. Lifetime Warranty void when not purchased from Authorized US D-Link Reseller. Please visit us.dlink.com for list of Authorized US Resellers.

Updated 20-DEC-2018 (SMO)

Hardware Rev C

DGS-1100-MP-MPP-SERIES_REVC_DATASHEET_1.00_EN_US.PDF

For more information

U.S.A. | 17595 Mt. Herrmann Street | Fountain Valley, CA 92708 | 800.326.1688 | us.dlink.com

©2018 D-Link Corporation/D-Link Systems, Inc. All rights reserved. D-Link and the D-Link logo are registered trademarks of D-Link Corporation or its subsidiaries in the United States and/or other countries. Other trademarks or registered trademarks are the property of their respective owners.

All references to speed are for comparison purposes only. Product specifications, size and shape are subject to change without notice, and actual product appearance may differ from that depicted herein.

Visit us.dlink.com for more details.

D-Link[®]
Building Networks for People